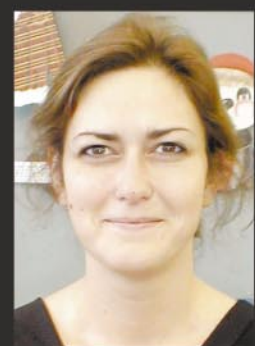




Fimo Celestial Choir



By KELLIE GREASON

Experience Level:
Beginner/
Post Beginner

Start with a clean work surface. Light colours can be easily contaminated, so take care to wash your hands well before handling the clay.

Mix together one-half package of translucent FIMO SOFT with one-quarter package of flesh FIMO SOFT. Knead together or roll through a pasta machine until completely combined and there is no more marbling.

Cut off one-quarter of the new flesh tone and reserve it to make your features. Roll remaining three-quarters in your hands to create an egg or

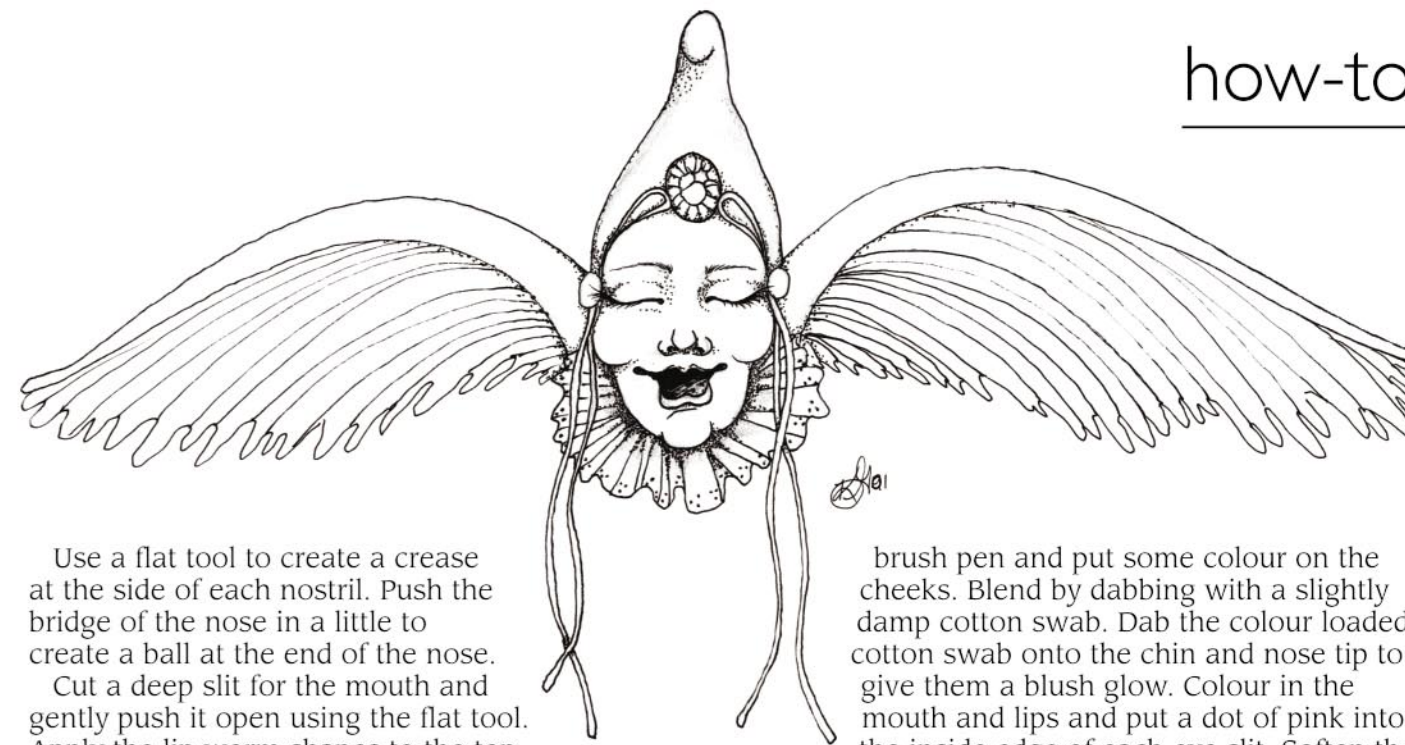
skull shape. Set down on your work surface to create a flat area on the back so your face doesn't roll around while you are trying to work on it.

Using the Fimo you set aside to make the features, roll a teardrop shape for the nose, a larger ball for the cheeks and smaller for the eyes. Use the diagram to size your shapes. The ball shapes will be cut in half to create a half sphere for the cheeks and eyes. Remember to save a small bit of Fimo for the lips.

Use the diagram to help with placement and set the teardrop nose in place and smooth seams with your fingertips. Remember not to press too hard.

Use the same technique to place the smaller half spheres for the eyes and larger for the cheeks.

Once you have your eyes, nose and cheek seams smoothed, check face for symmetry and repair any dents by smoothing out with your fingertips.



Use a flat tool to create a crease at the side of each nostril. Push the bridge of the nose in a little to create a ball at the end of the nose.

Cut a deep slit for the mouth and gently push it open using the flat tool. Apply the lip worm shapes to the top and bottom edges of the mouth. Make the bottom lip a bit fuller for a pouty look. Shape your lips by slightly smoothing the lip seams and pushing in a little cupid's bow on the top lip. Using a toothpick or stylus tool, gently push the edges of the mouth up and out into a smile. Open the bottom lip slightly by pulling gently with your thumb.

For the eyes, push in eye slits by gently rolling flat tool along the bottom edge of the eye lumps. Set face aside.

For the hat, condition one-half of a package of silver sparkle FIMO SOFT by kneading until workable. Form a cone with a flat base.

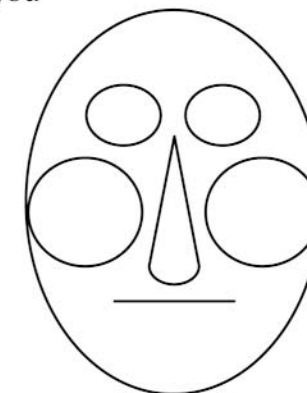
Apply flat cone base to the top of the head and gently mold until it fits. Pull the tip of the cone hat forward to create a curl.

Brush Fimo silver metallic powder onto the tip of the cone hat and let some of the sparkle fall onto the face.

Check your work. After you bake it, you can't change any mistakes. Check for fingerprints and make sure you are happy with the expression. Place angel on a foil covered cookie sheet for baking.

Bake at 265° F for 20 minutes in the home oven. Let cool.

To colour the face, use the pink Marsgraphic



Pattern Actual Size

brush pen and put some colour on the cheeks. Blend by dabbing with a slightly damp cotton swab. Dab the colour loaded cotton swab onto the chin and nose tip to give them a blush glow. Colour in the mouth and lips and put a dot of pink into the inside edge of each eye slit. Soften the lip colour by blotting off with cotton swab.

Use the black Pigment Liner pen to fill in the eye crease and create eyelashes.

Put a thin coat of Fimo varnish on the hat and mouth, being careful not to smudge the wet marker.

Allow to dry overnight.

Glue jewels and trims to edge of hat, around the face, to create a crown.

With a needle and matching thread, gather a 2 inch piece of lace into a collar and glue under the chin. Glue wings and extra feathers to the back of the head. A thin metallic cording can be attached through the hat loop to hang the piece. ☺

Materials required:

- FIMO SOFT translucent no. 8020-014
- FIMO SOFT flesh no. 8020-43
- FIMO SOFT silver sparkle no.8020-812
- Fimo sculpting tools
- Fimo silver metallic powder no. 8708
- Fimo varnish
- Pink Marsgraphic brush pen
- Black Pigment Liner pen
- Cotton swabs
- Jewels and trinkets
- Beaded trim
- Feather angel wings about 4 1/2" wide.
- Extra feathers
- Thin metallic cording
- 2 part epoxy glue (follow manufacturer's instructions for drying time)
- Needle and matching thread
- Two inches of lace trim